

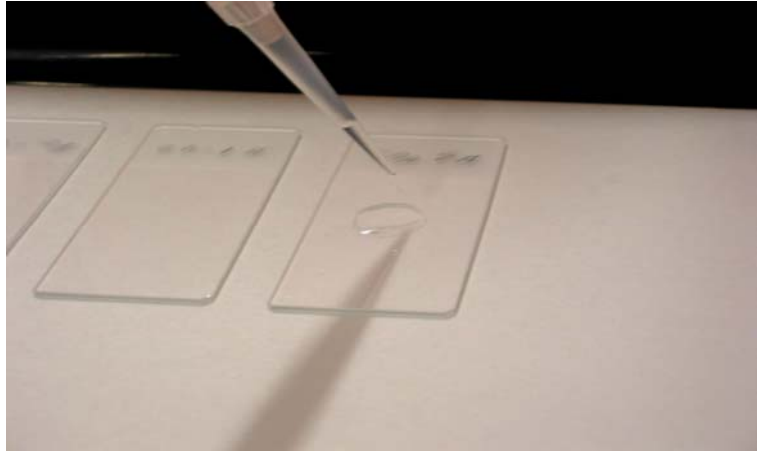
Liqui-PREP™

The Next Generation of Liquid Cytology

Technical Tips

Number: 00001(Modified)

Date: 02/09/05



SUBJECT: Preservation of processed specimens for future analysis

TECHNICAL TIP OVERVIEW:

The following Technical Tip is for storing specimens after the original slides have been processed. A note of caution! Though the **Liqui-PREP™** System allows for keeping of ALL specimens for future processing, this decision can result in storage and space problems. We suggest only suspicious specimens (such as ASCUS, Low and high grade lesions, etc) be kept and a one year storage time limit be applied. This will minimize space problems while keeping these interesting specimens for future comparison and study.

TECHNICAL TIP: 00001

The following is a procedure for preserving the specimens after processing using the **Liqui-PREP™** Systems. As the **Liqui-PREP™ Preservative Solution** is Molecular Biology friendly, this procedure can also be used for preparing specimens for additional molecular and non-molecular testing where the specimens are kept in a cell pellet prior to the additional testing.

- After processing pipette 5 ml of **Liqui-PREP™ Preservative Solution** into the centrifuge tube, cap the tube using Para Film or other capping device.
- Mix the specimen well using a Vortex for 15 seconds.
- Centrifuge the specimen at 1000g for 10 minutes.
- Decant the supernatant.
- *NOTE: If proceeding directly to another testing procedure such as molecular testing, we suggest the above process be performed another time.*
- Pipette 5 ml of **Liqui-PREP™ Preservative Solution** into the centrifuge tube, cap the tube using Para Film or other capping device.
- Storage can be at ambient room temperature or at 2° to 8° C. We make no claim for storage time though we have actual storage of 14 month with our in-house stock cell lines.
- Prior to re-processing must be brought to room temperature for at least 1 hour.
- After the preserved specimen is at room temperature, vortex the specimen to mix the specimen.
- Centrifuge the specimen for 10 minutes at 900 g (+/- 50 g) for swinging bucket centrifuge and 1200 g (+/- 50 g) for fixed head centrifuges.
- Decant the supernatant and proceed to perform another wash of the pellet using the buffer of the additional test to be used. (This additional wash may not be necessary. The user must determine if it is necessary.)

Any Questions, Contact your local Liqui-PREP™ Representative or :

LGM International, Inc.
Fort Lauderdale, FL USA
Telephone: (954) 253-5671; Fax: (954) 584-2998
Email: techservices@lgmintl.com