

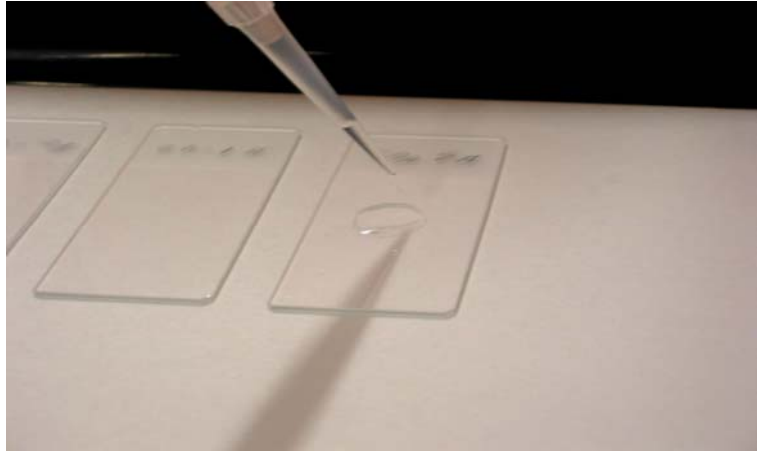
*Liqui-PREP™*

## The Next Generation of Liquid Cytology

# Technical Tips

**Number:** 00002

**Date:** 03/15/03



**SUBJECT:** Use of NON-DETACHABLE head collection devices

### TECHNICAL TIP OVERVIEW:

The following Technical Tip is for those users of the **Liqui-PREP™** System that do not want to use detachable head collection devices such as the Rovers Cervex™ Brush. The use of the Rovers Brush is easier and is the most preferred method of cervical collection throughout the world, however, our experience has shown any device, used properly, will result in very good cellular recovery.

TECHNICAL TIP: 00002

The following is a procedure for collection of cervical specimens using non-detachable head collection devices.

- After collecting the specimens using a non-detachable head collection device:
  - Stir the sampling device vigorously 10 to 15 times in the **Liqui-PREP™ Collection Vial** containing preservative solution.

OR

- Cut the non-detachable head collection device no more than 3.5 cm in length. Perform this cut over the mouth of the **Liqui-PREP™ Collection Vial**.
- Place the lid on the vial, tighten the vial cap, write the patient's information on the vial label and send this collection vial to the laboratory for processing.

**NOTE:** More than one collection device are routinely being used for collecting cervical specimens. The most common combinations we observe are the *Rovers Cervex™ Brush* and the *Rovers EndoCervical™ Brush* or the *Rovers Cervex™ Brush* and a additional bushy brush (cut to size of the collection vial).

Any Questions, Contact your local Liqui-PREPTM Representative or :

**LGM International, Inc.**  
Fort Lauderdale, FL USA  
Telephone: (954) 253-5671; Fax: (954) 584-2998  
Email: techservices@lgmintl.com