

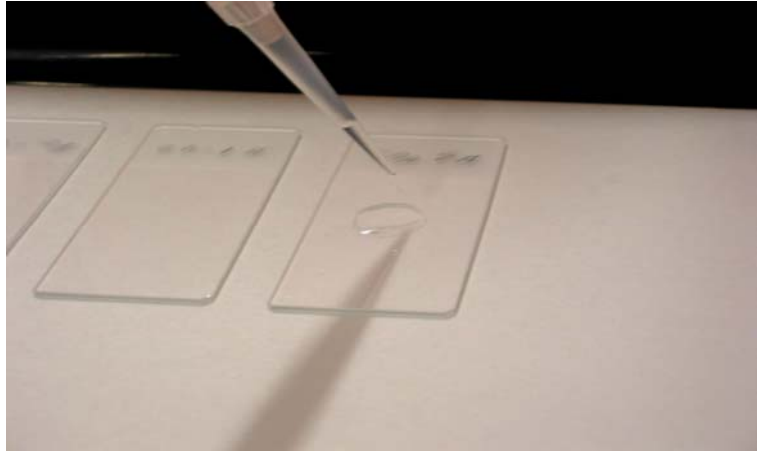
Liqui-PREP™

The Next Generation of Liquid Cytology

Technical Tips

Number: 00008

Date: 04/28/04



SUBJECT: Cellular Adhesion

TECHNICAL TIP OVERVIEW:

Cellular adhesion problems for encapsulated **Liqui-PREP™** processed cell pellet occur for three reasons:

1. Microscope Slides assumed to be clean may have residual cutting oils or detergents which will interfere with the encapsulated cellular pellet adherence to the glass microscope slide.
2. **Liqui-PREP™** preparations are not allowed to thoroughly dry before staining.
3. “Water wash steps” during staining are applied too vigorously.

TECHNICAL TIP: 00008

1. **Microscope Slides** - During the process of making the slides, fine oils are used to cut the glass and detergents are used to clean the glass microscope slides. Generally if one uses high quality glass microscope slides, the oils and detergents are removed prior to packaging. However, even with high quality glass microscope slides, there may be a residual of these oils and detergents on the slides.

This situation is easily resolved by washing the glass Microscope slides prior to processing. This procedure is very easy and fast. See [Technical Tip TT00003 Ethanol Washing of Glass Slides](#).

2. **In-complete Dried Slides** - Complete drying of the **Liqui-PREP™** processed slides is an essential step. The drying time for the **Liqui-PREP™** processed slides are temperature and humidity dependent and can vary among laboratory. Drying times can be shortened by using heat to rapidly dry the slides as is presented in [Technical Tip TT00004 Heat Drying](#).

3. **H₂O Washing During Staining** - With liquid preparation slides, it is not necessary to use the “old fast running water” wash after the Hematoxylin staining step. In replacement of fast running water step, the use of water baths are more than adequate to remove the excess Hematoxylin. (In the LGM laboratory, three water containers - 30 seconds, 30 seconds, and 1 minute, are used prior to continuing onto the 95% Ethanol wash). Alternatively, slides can be washed with a “soft trickle of water” allowed to run into one of the corners of the wash container.

Any Questions, Contact your local Liqui-PREPTM Representative or :

LGM International, Inc.
Fort Lauderdale, FL USA
Telephone: (954) 253-5671; Fax: (954) 584-2998
Email: techservices@lgmintl.com