



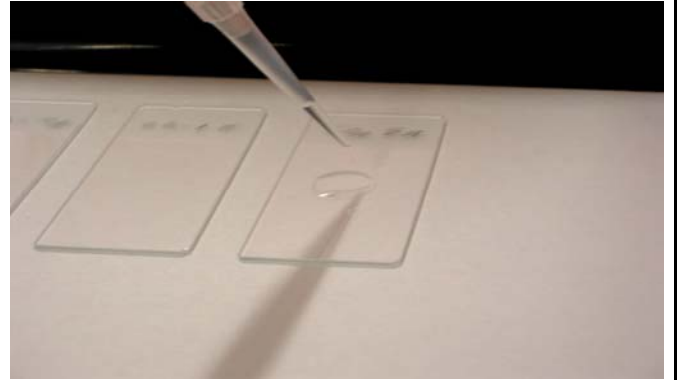
*Liqui-PREP™*

## The Next Generation of Liquid Cytology

# Technical Tips

**Number:** 00012

**Date:** 04/25/05



**SUBJECT:** Excess inflammatory cells obscuring *Liqui-PREP* slides.

### TECHNICAL TIP OVERVIEW:

In processing of certain specimens, excessive inflammatory cells (WBC) may obscure cells on the slide. The presence of WBC are diagnostic and can be an indicator of a low grade infection, immune response or an inflammatory process and should be reported in the diagnosis. While the Cleaner may remove a portion, excess WBC can overload the slide.

Cervical specimens, that upon initial processing produce large volume cell pellets, in excess of 750ul, should be suspect of containing a large number of WBC. One of the techniques mentioned below should be considered during initial slide prep.

Excess WBC can also be an indication of heavy handed collection technique. If your Gynecologists are new to the use of Rover brush, you should review the Rovers training tips.

### Technical Tip: 00012

To reduce the number of WBC on a slide preparation, any of the following techniques will assist in reducing the number of WBC:

- 1) Circle Enlargement:** The recommended circle size is 15-18 mm. If you expand the 50 ul drop to 20-35 mm, this will act to disperse the cells over a greater surface area reducing the concentration of WBC.
- 2) Additional Cell Base:** The further addition of Cell Base to a slide with dense WBC will provide an additional dilution effect. The standard dilution of 1:3 (1 part cell pellet: 3 parts Cell Base) can be increased to 1:4.
- 3) Aliquot Work up:** For specimens with very large cell pellets (>750 ul), the addition of large volumes of Cell Base is impractical (>1,000 ul). For these specimens, the cell pellet should be vigorously vortexed. A 250-300 ul representative portion of the specimen can be transferred into a secondary tube. This aliquot can be processed by standard method (1:3 dilution).
- 4) Duplicate Circle:** For specimens that may be suspect, prepare a standard circle (15-18mm) using the Cell Base. Prepare an adjacent circle and expand the circumference (20-35mm). The second circle can be reviewed if necessary.

### Gynecologist Collection Note:

- 1) Additional training for the collection.** MODERATE pressure with a smooth clockwise turning is all that is needed for good collection.
- 2) Light wiping of the Cervix** – Refer to the paper on light collection by Dr. Curiel on lightly wiping the cervix prior to sampling.

Any Questions, Contact your local Liqui-PREPTM Representative or :

**LGM International, Inc.**  
Fort Lauderdale, FL USA  
Telephone: (954) 253-5671; Fax: (954) 584-2998  
Email: techservices@lgmintl.com