

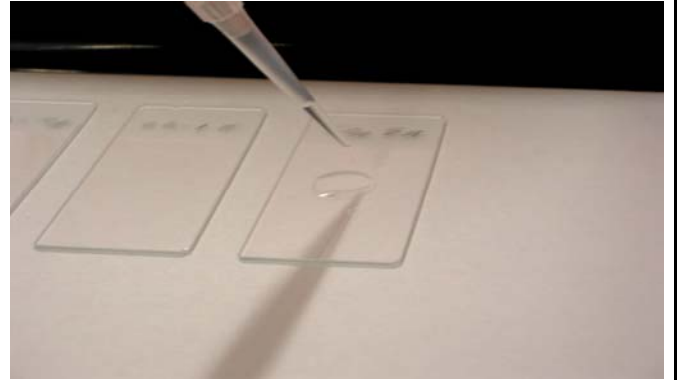
Liqui-PREP™

The Next Generation of Liquid Cytology

Technical Tips

Number: 00013

Date: 06/24/05



SUBJECT: DNA PCR Protocol using **Liqui-PREP™**

TECHNICAL TIP OVERVIEW:

This Technical Tip for DNA PCR Reflex testing is from a **Liqui-PREP™** user, in Israel. The procedure is being routinely used with good success.

THE PROTOCOL:

DNA Extraction:

- * Transfer the complete **Liqui-PREP™ Cellular Pellet** along with the remnant fluid into a 1.5 ml eppendorf tube.
- * Centrifuge the specimen for 10 minutes at 1000g.
- * Remove the supernatant by inverting the centrifuge tube and lightly blot residual liquid from the lip of the centrifuge tube.
- * Add 400 µl of PCR grade water
- * Mix the pellet well using a vortex to break up the pellet.
- * Place the centrifuge tube in a DRY HEAT BLOCK at 100°C for 10 minutes. (This causes cytolysis of the cells and releases the nucleic and cytoplasmic DNA into solution.
- * Cool the specimen to Room Temperature.
- * Add 10 µl of Proteinase K (for Proteolysis) and incubate over night at 37°C or incubate at 55°C for 5 hours.
- * To stop the proteolysis, insert the tubes into a DRY HEAT BLOCK at 100°C for 10 minutes.

The supernatant now contains DNA sequences that can be identified by PCR.

- * Prepare the dntp's solution for the hybridization with DNA, if present.
- * To 90 µl of the dntp's solution, add 10 µl of each sample and perform the routine PCR process.

Samples are run on the gel in parallel with known DNA controls.

Results are read as usual in the PCR gels.

Any Questions, Contact your local Liqui-PREPTM Representative or :

LGM International, Inc.
Melbourne, FL USA
Telephone: (321) 254 0480; Fax: (321) 254-0481
Email: techservices@lgmintl.com